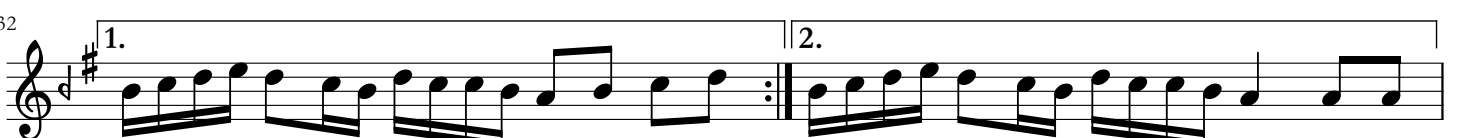
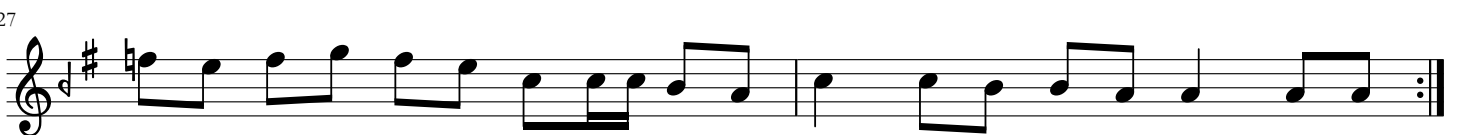
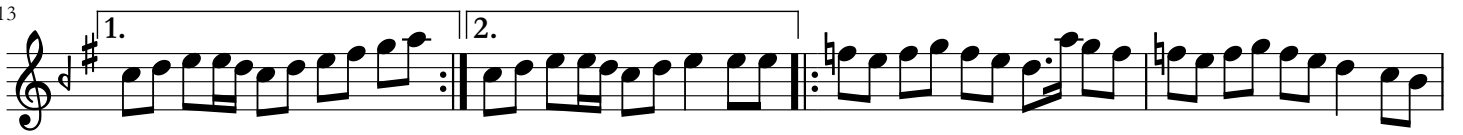
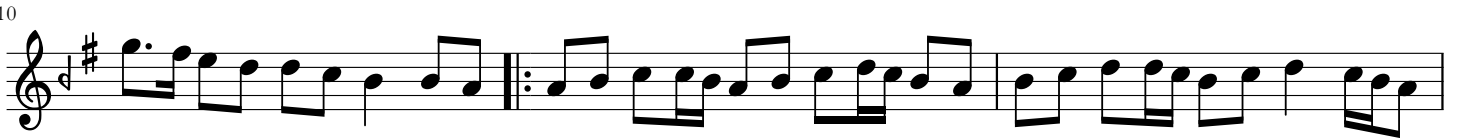


Hüseyini Peşrev

Küll-i Külliyyât

Usul: Fahte*



34



38



42



46



50



53



57



60



62

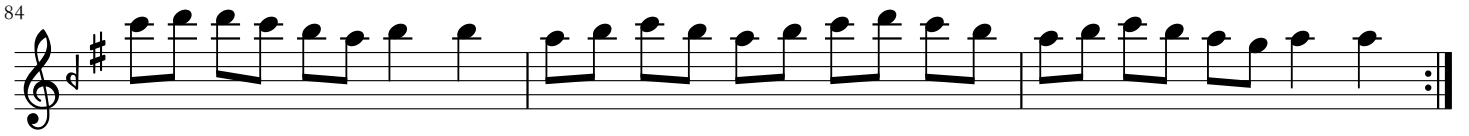
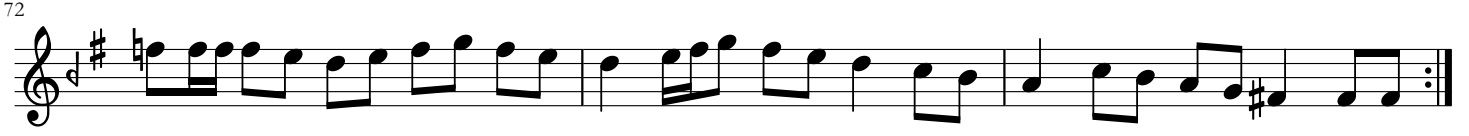


65



67





* Yazmanın orijinalinde "usule'ş düyek" ifadesi bulunmasına rağmen hem eserin Kantemir'deki yazımına hem de melodik yapısına bakılarak Fahte olduğu anlaşılmaktadır.
Formun genel yapısı için de orijinal nüshada hane ve mülazimler yoktur ifadesi bulunmaktadır.